

Transparent Setup Guide

This documentation was developed by, and is property of Bind Lda, Portugal.

As with any software product that constantly evolves, our themes are in constant evolution. If you can't find an answer to your questions by reading this manual, please contact us directly. See how in section Customer Support. We'll be glad to assist you!

© 2012 Bind Lda | support@bind.pt | 252 099 068

for future updates follow us twitter.com/bindskins | like us facebook.com/bindskins

Table of contents

Table of contents.....	2
Theme Details	3
Installation.....	4
Files available for download	4
Setup files	4
SPO Installation	5
Activating the features throughout the sites and sub-sites	6
Enabling design for specific Site Templates	6
Installing for the Public Facing Website	7
Install the theme on public facing websites	7
Configure your public facing website	9
How to access site settings?.....	9
Pages Name	9
Page Width	10
Know Issues.....	10
Repairing / uninstalling the theme	12
Trial themes	13
CSS Compression.....	13
Troubleshooting.....	14
Customer support	15
Standard support	15
Bind Tuning Knowledge Base	15
Bind Tuning Helpdesk	15
Premium Support.....	15

Theme Details

transparent Site ▾ SubSite

Inner Menus Typography Forms Chrome Search this site...

Pictures
Example Pictures

Libraries
Site Pages
Shared Documents

Lists
Calendar
Tasks
ListInRoot
tester
announcementslist

Discussions
Team Discussion

Team Site
meet
search

Recycle Bin
All Site Content

Subscribe our newsletter and get the latest news.
Name: _____
Email: _____
SEND

Transparent for Sharepoint
The new Transparent is a modern, professional Sharepoint theme, that empowers your SharePoint Web Application. Customize it to your needs by using our amazing online tuning tool. You can configure colors, images, effects and many other options, achieving an unique theme that matches your preferences.

All site templates
We know how important it is to have a consistent look across the entire application. That's why all our Sharepoint themes come with fully customized styles for all site templates. Collaboration, team and publishing sites, blogs, wikis and others are all displayed with the Transparent look applied.

THIS IS A SAMPLE LIST

Type Name	Modified by
Management report 2010	Administrator
Expenses forecast	Ann Louise
Purchases for next week	Administrator

Calendar Example
theme includes all types of site

Lorem Ipsum dummy text
Lorem ipsum dolor sit amet, sectetuer Quisque volutpat mattis eros. Nullam malesuada erat ut turpis. Suspendisse uma nibh, viverra non, semper suscipit, posuere a, pede...
READ MORE

It has roots in a piece of classical Latin literature from 45 BC, making it over 2000 years old. Richard McClintock, a Latin professor at Hampden-Sydney College in Virginia, looked up one of the more obscure Latin words, consectetur, from a Lorem Ipsum passage.

Theme name Transparent (based on Transparent)

Platform SPO (SharePoint Online Office 365)

Date generated 2013-28-1 23h10m

Customer email mail@bind.pt

Installation

Files available for download

Your custom theme includes the following files:

Transparent.SPO.zip

This is the installation file

Transparent.SPO.UserGuide.pdf

Current documentation file

Setup files

Extract Transparent.SPO.zip to your computer.

The zip file includes two WSP compiled solutions, each of which contains a feature that will have to be enabled on desired websites after installing. The first solution is the "Transparent.SPO.wsp" and installs the CSS and images chosen by the user. The second solution is "TransparentPackage.SPO.wsp" and installs the necessary master pages. They are shipped separately by design so one can have multiple Transparent themes installed, without requiring multiple master pages, since they would be the same.

Both solutions contain files that will be added to each site when the features are activated. It's important to know that we do not change or remove any of the default SharePoint hive's files. Both solutions simply add the master pages, images and CSS files needed by the themes.

The files to look for are:

Transparent.wsp – Contains all the necessary images and customized CSS.

TransparentPackage.wsp – Contains all the necessary master pages.

Note: After installing both features, manual site-by-site activation is needed for the theme to be active. One can either activate master page and CSS inheritance on a root site, or activate both features in a site-by-site basis.

SPO Installation

After submitting theme requests for SPO, a zip file is available for download. This is the procedure to get the SharePoint site with the look and feel chosen.

1. Extract the received zip file
 2. Open the SharePoint Site and go to Site Actions
 3. Open "Solutions" under "Galleries" or /_catalogs/solutions/Forms/AllItems.aspx
 4. Click "Solutions" on the Ribbon and then click "Upload Solution"
 5. Select Transparent.wsp
 6. Confirm and activate the solution
 7. Click "Upload Solution" once more
 8. Select TransparentPackage.wsp
 9. Confirm and activate the solution
 10. Go to Site Actions → Site Settings → Site features → "Manage site features" under "Site Actions" (/_layouts/ManageFeatures.aspx).
- Note: the activation of the features should be made on the root site, because the master pages will have references to /Style Library. If using the root site is not possible for some reason, after activating the features on a subsite, it is required that the references to **/Style Library/** are replaced by **/yoursubsiteurl/Style Library/** within the provided master pages so the CSS resources are correctly loaded.
11. Activate the Transparent Package Feature
 12. Activate the Transparent Feature
 13. Manually change the master, either with SharePoint Designer, and right clicking the master in [_catalogs\masterpage](#), or by going to the "Master Page" option under "Look and Feel" (SharePoint Server Publishing Feature must be enabled for the option to appear).
 14. Set the master page as Default Master Page
 15. Set the master page as Custom Master Page

Note: Since in SharePoint different site templates have different master pages, we ship three different master pages for using in Search Sites (Transparent.minimal.master), Meeting Sites (Transparent.meetings.master) and General Sites (Regular master page Transparent.master) for all other sites.

Activating the features throughout the sites and sub-sites

There are two ways of working with the features.

- Activating both features one the root web site and optionally chose master page inheritance in "Master Page" options for all sub-sites to have the same look and feel (this option needs the "SharePoint Server Publishing Feature" enabled, or else we can chose the master page by going to the site's `_catalogs\masterpage` folder with SharePoint Designer;
- Activating both features on the root site, and again on each site where we want the look and feel enabled (no inheritance);

Note: When having multiple themes, based on the same package, we recommend using the "AlternateCSSUrl" field in master page options and disable master page inheritance, to avoid any issues with the CSS from the different themes.

Alternate CSS file entries can be added, after activating the theme feature on the current site, and typing: `http://[my_sharepoint_site]/_themes/Transparent/theme.css`

Location: `http://[my_sharepoint_site]/_Layouts/ChangeSiteMasterPage.aspx`

Enabling design for specific Site Templates

Contrary to the "regular" SharePoint 2010 (or *on-premises*), the SharePoint Online themes cannot have any automation capabilities regarding either the PowerShell installation scripts, or the master page change. This means that we have to manually add the solutions, activate them and change the master page.

The Package feature installs all master pages to a site. Then, it's up to who's installing it to pick the required master page. Therefore, if the site is a "Search Site", we should use `Transparent.Minimal.master`; if it's a "Meeting Site", `Transparent.Meetings.master`; if the site template of any other, the default master page to use is `Transparent.master`.

If the publishing infrastructure feature is available and enabled, the master page can be selected through the site actions, site features, in "Master page" under "Look and Feel". The common procedure to change the master page on hosted environments is to use SharePoint Designer, opening the site in `_catalogs\masterpage`, right-click the master page and select both options:

- Set as Default Master Page
- Set as Custom Master Page

The complete installation procedure is explained on the next page.

Installing for the Public Facing Website

This theme is enabled with a version for your Public Facing Website.

Make sure you have taken all steps in the following sections before proceeding:

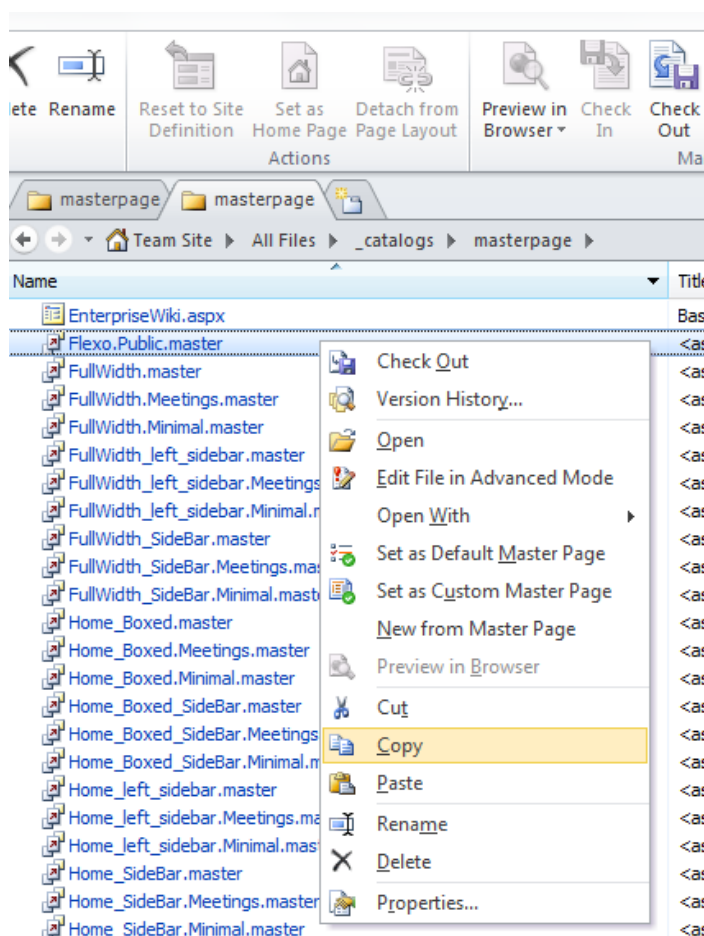
- Files available for download
- Setup Files
- SPO installation

Install the theme on public facing websites

1 – Open your SharePoint Site with SharePoint designer

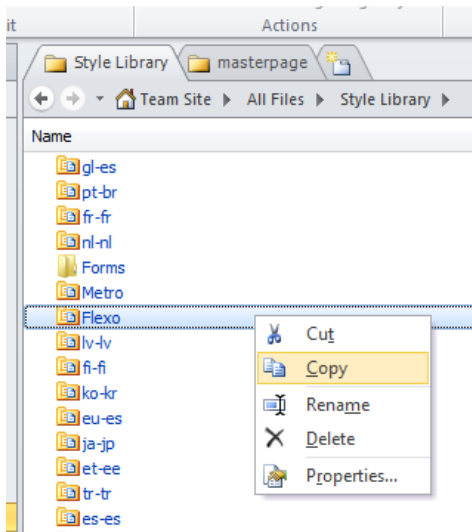
2 – Open your **public** SharePoint Site with SharePoint designer

3 – In your SharePoint site using SharePoint designer go to All Files > _catalogs > masterpage select the file *YourTheme.ONLYPublicWeb.master*, and copy it



4 – In your **public** SharePoint site using SharePoint designer go to All Files > _catalogs > masterpage and paste the file

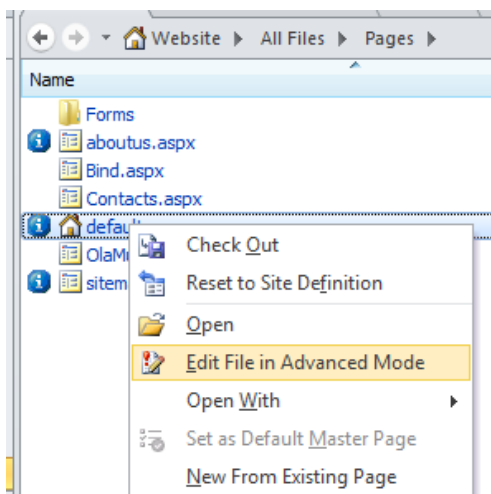
5 – In your SharePoint site using SharePoint designer go to All Files > Style Library, select the theme name folder and copy it



6 – In your **public** SharePoint site using SharePoint designer go to All Files > Style Library and paste the folder

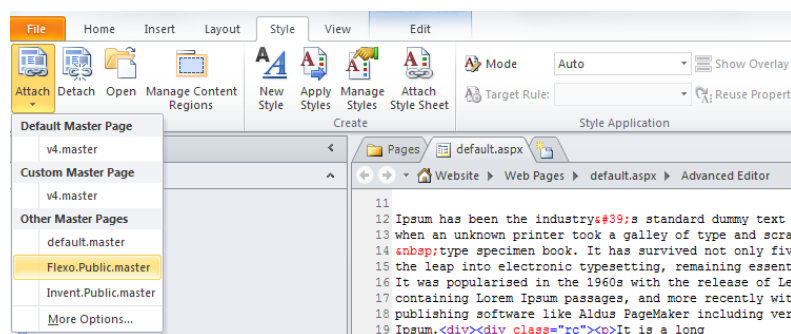
7 - In your **public** SharePoint site using SharePoint designer go to All Files > Pages

8 – Select one page, right click on it and choose Edit in advanced mode



9 – In the edition mode click on the style tab, and then choose your *ThemeName.Public.master* from the Attach menu

10 – Save the changes to the page



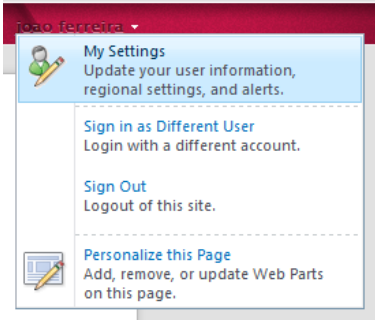
11 – Repeat 8, 9 and 10 for each page

Configure your public facing website

Before applying the theme to your site we recommend you to make some changes to the pages in order to get the menu features working properly.

How to access site settings?

- 1 – Login into your website
- 2 – Click on your username, and choose My Settings



Pages Name

Each page title should be in the format “number dash name” 1-New Page.

The number before the name is used to sort the pages in the horizontal menu, and will not be visible on the site.

You should remove the number and the dash from the web address and from the navigation title.

Create Web page

Choose page properties

Users can navigate to your site by typing the Web site address into a browser. Type only the last part of the address that you are creating, keeping it short and easy to remember.

Page information

*Page title:
1-New Page

*Web address:
http://handsontek-web.sharepoint.com/Pages/ NewPage

Overwrite existing page:

Navigation

Show this page in the Navigation bar.

Navigation title: Select parent:

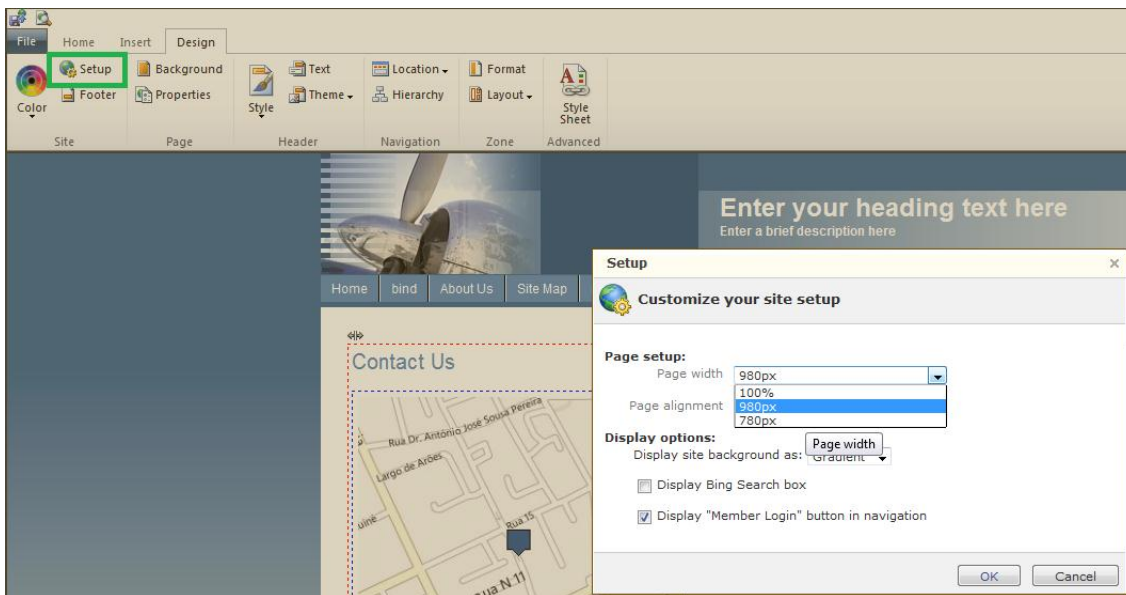
Standard page elements

Include: Header
 Footer
 Navigation bar

< Previous Finish Cancel

Page Width

By default Microsoft master page support 3 different widths for the public sites: 780px, 980px and 100%.



After you choose the page width, you will need to edit the css file from the theme.

- 1 – Open your **public** SharePoint site with SharePoint designer
- 2 – Edit the theme.css file located under All Files > Style Library > *YourThemeName*
- 3 – Add the code bellow to the bottom of the file.

```
.container { width: 980px;}
```

Know Issues

- Microsoft provide a graphical interface to personalize the public facing websites, unfortunately it's not 100% compatible with out themes.

Functional	Non-Functional
<ul style="list-style-type: none">• Clipboard functionalities• Pages functionalities• Font functionalities• Paragraph functionalities• Site functionalities• Objects functionalities• Links functionalities• Gadgets functionalities• Site setup• Zone Layout	<ul style="list-style-type: none">• Color Scheme• Footer options• Page Background• Header functionalities• Navigation Functionalities• Style sheet

- The navigation menu only has one level.
- ASP:Literal Error

- If your site is showing an error like the one in the image below you should do the following procedure:



- 1- Open your **public** SharePoint site with SharePoint designer
- 2- Go to All Files > _catalogs > masterpage > *YourThemeName.ONLYPublicWeb.master*
- 3- Find the line that starts with

```
<script type="text/javascript" src="<asp:Literal runat='server'
```

Eg.

```
<script type="text/javascript" src="<asp:Literal runat='server'
Text='<%$SPUrl:~sitecollection/Style Library/SPC/path.js%>' __designer:Preview="/Style
Library/SPC/path.js" __designer:Values="&lt;P N='ID' T='ctl13' /&gt;&lt;P N='Text'
Bound='True' T='SPUrl:~sitecollection/Style Library/SPC/path.js' /&gt;&lt;P N='Page'
ID='1' /&gt;&lt;P N='TemplateControl' ID='2' /&gt;&lt;P
N='AppRelativeTemplateSourceDirectory' R='-1' /&gt;"/>"></script>
```

- 4- *Replace it by:*

```
<script type="text/javascript" src="<asp:Literal runat='server'
Text='<%$SPUrl:~sitecollection/Style Library/SPC/path.js%>' />"></script>
```

Repairing / uninstalling the theme

To uninstall the packages we recommend the following procedure:

1. Reset root site master page and all inheritance, if any (site actions, site settings, master page)
2. Deactivate Transparent Package Feature and Transparent Feature in Site Features (/layouts/ManageFeatures.aspx)
3. Deactivate both solutions within the Solutions Gallery (/catalogs/solutions/Forms/AllItems.aspx)
4. Remove both solutions from the Solutions Gallery
5. Open SharePoint Designer 2010
6. Erase any existing Transparent master pages in _catalogs\masterpage
7. Erase any Transparent folders in \Style Library

To repair the packages (re-install), please refer to the section above, "Installing".

Trial themes

Trials are not available for Office 365.

For more information on downloading trial themes, please read our knowledge base article:

<http://support.bind.pt/entries/22356848-how-can-i-request-a-trial-theme>

CSS Compression

This theme is delivered with **compressed CSS files**, for **performance improvement reasons** (making websites load a lot faster).

Next to each **theme.css** file you will find a **theme.uncompressed.css** file. In case you need to edit your CSS, or if you just don't want it compressed, you can rename it and use it, instead of the compressed version.

This theme includes several other CSS files (for containers mainly). Uncompressed versions will be sent upon request.

Troubleshooting

Our themes are extensively tested. Nevertheless, as with any software product, occasional issues may occur. Here we list the solution for some common ones.

[How to use Megamenu / Accordion navigation with BindMENU \(from Bind Tuning v1.1.0\)](#)

[How can I apply my theme to all sites and subsites?](#)

[Displaying site scope in search for Sharepoint 2007](#)

[Deploying Sharepoint themes globally](#)

[Editing footer links and copyright](#)

[Adding a custom logo](#)

[Deactivating package feature with inherited master pages](#)

[Applying a Bind Tuning theme causes InfoPath fonts to not display](#)

[Key Filters in vertical menu are partially hidden](#)

[Modal dialog windows not rendering correctly](#)

[Scroll bars not displaying in Internet Explorer browser](#)

[Navigation in a picture list item breaks to a new line](#)

[Changing a masterpage](#)

[Enable/disable features](#)

[Deactivating package feature with inherited master pages](#)

[Content overflows my page's width](#)

[Web fonts are not being rendered](#)

[I still didn't receive my custom theme, what should I do?](#)

[How do I get an update for my theme?](#)

For other troubleshooting topics visit our Knowledge Base at <http://support.bind.pt>

Customer support

BIND is proud to deliver excellent support service to its customers. You can access support in multiple ways, described below.

Standard support

Bind Tuning Knowledge Base

Our knowledge base is an excellent resource when you need support. Access our team's articles with solutions to common questions or to issues previously encountered by others. Suggest further enhancements to our products by posting your ideas, or vote on other users ideas.

Please note that our knowledge base is a resource for search and community sharing. Other options are available for urgent support.

To access the forum please visit <http://support.bind.pt/forums>

Bind Tuning Helpdesk

You can also choose to post your questions and suggestions directly to our support team, through our helpdesk system.

Your question will be reviewed and forwarded to the proper department.

Always remember to mention your invoiceID when submitting a new support ticket. You should receive an answer in less than 24 hours.

To access the forum please visit <http://support.bind.pt/tickets/new>

Premium Support

- Theme installation / upgrade
- Manual theme adjustments and customization
- Further changes to themes
- Premium support is required beyond 60 days after purchase

For further information on Premium Support please visit www.bind.pt or email us at mail@bind.pt.